



# **STUDENT ACCOMMODATION GUIDE 2024/2025**

## Student Accommodation Guide

<b>Introduction to our Accommodation Guide:</b>	<b>2</b>
<b>Accommodation Options</b>	<b>3</b>
Student Residences	3
Landlords in Private Accommodation:	6
Homestay	6
Short Term Stays - Hostels	7
<b>Preventing Fraud</b>	<b>7</b>
<b>Renting Guidelines</b>	<b>8</b>

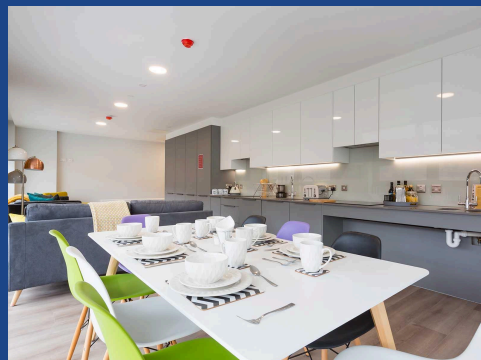


## Introduction to our Accommodation Guide:

Welcome to the DBS Accommodation Guide. Choosing the right place to stay while you are studying in Dublin can be a daunting challenge, especially when you are unfamiliar with the city. This guide has been produced by the DBS Student Experience Team to help you with your search.

### This guide covers:

- The types of accommodation available in Dublin City
- Where to look for accommodation
- Guidelines for renting in Dublin
- Tenant and landlord rights and responsibilities

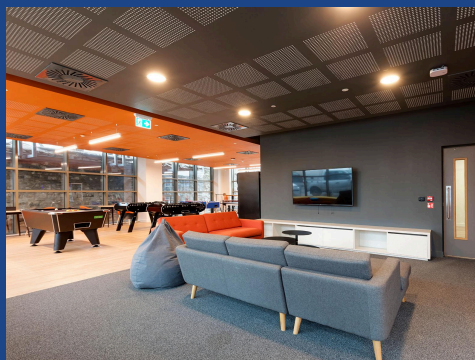


### IMPORTANT NOTE:

Please be cautious when renting accommodation from private landlords - DO NOT pay a deposit or rent without viewing the property in person first. Our Student Experience Team will help to advise you if you suspect an accommodation source is fraudulent or suspicious.

For further information and advice please email [The Student Experience Team](#) who will assist you with any questions or queries.

We look forward to welcoming you to DBS and we hope you enjoy your time in our 'Fair City'!

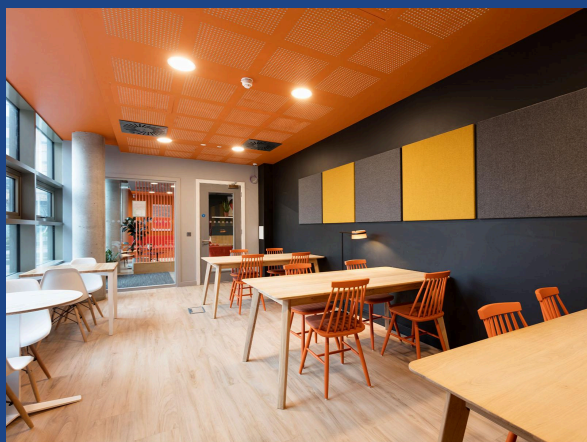


## Accommodation Options

### Student Residences

Dublin has a number of high quality residences purposely built for students. Each room is en-suite (some twins available), with plenty of storage space and room for study. The shared kitchens and living space are ready to move into, and the residences have excellent gyms, study and communal spaces.

Prices start at €270-450 per week and include utilities and WIFI.



### September 2024 Availability:

DBS have secured a limited number of rooms with our accommodation partners, Mezzino, Brickworks. These rooms are available for the full academic year and for semester 1 and 2. These rooms are available on a strictly first come first served basis.

All rooms at Brickworks feature plenty of storage space, great workspace, and a private ensuite bathroom. You'll have access to a well equipped living and kitchen areas and all bills, contents insurance and WIFI are included in the rent. Brickworks has a fully equipped gym, study rooms, games area, cinema room and roof terrace with amazing views of Dublin. If you would like to view Brickworks virtually, [please click here](#).

Brickworks is located in the Heart of the Liberties, one of Dublin's most historic neighbourhoods, known for traditional pubs, weekend markets and tourist attractions. It is a 20 minute walk to the

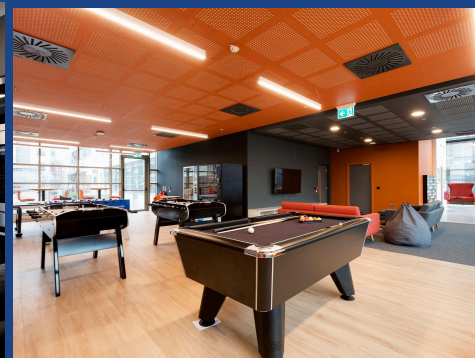
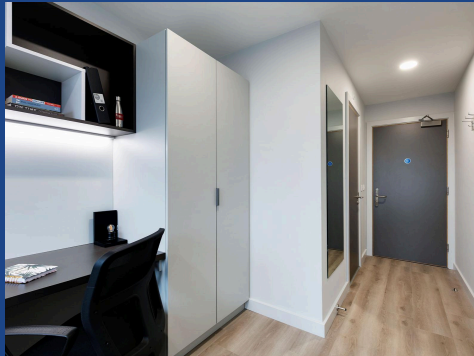
DBS campus. All utilities including WIFI are included in the price. We have 3 options for students to avail of.

**Option one** - The room is available for semester 1 - Check in 15/09/2024 - 22/12/2024. The total cost of your stay is €5,600.

**Option two** - The room is available for semester 2 - Check in 06/01/2025 - 04/05/2025. The total cost of your stay is €6,800.

**Option three** - The room is available for the full academic year - Check in 15/09/2024 - 04/05/2025. The total cost of your stay is €13,600.

Please contact Student Services to check availability and book your room. You can view some of the images of Brickworks below.



## Landlords in Private Accommodation:

This is the most common form of renting in Dublin. You can either rent a whole property or a single room. Please exercise caution and inspect the property in-person before paying any deposit. We recommend using [Spotahome.com](http://www.spotahome.com), properties are flagged as checked, providing peace of mind when doing your search with this site.

The following is a full list of online databases with houses or rooms to rent:

- <http://www.spotahome.com>
- <http://www.hostingpower.ie>
- <http://www.daft.ie>
- <http://www.myhome.ie>
- <http://collegecribs.ie>



## Homestay

DBS are delighted to recommend International Student Accommodation (ISA) to provide an option (subject to availability) to stay with a host family for our students. ISA is the largest independent provider of host families in Ireland. All families are inspected and Garda (Police) vetted. Living with a host family is a great way to meet Irish people and immerse yourself in Irish life. It allows you to settle into Dublin and search for your own room once you arrive in the city.

Homestay will be based on availability and prices start at €250 per week for a single room, half board. You will also need to factor in approx €25 per week to commute to college. Host families are located in the suburbs of Dublin with good transport links to the City Centre.



## Short Term Stays - Hostels

Hostels provide short term rooms, usually in dormitories. The below list is located very close to our campus.

- Kinlay House: <https://kinlayhouse.ie/>
- Barnacles Temple Bar:  
<https://barnacles-temple-bar-house-dublin.hotel-ds.com/en/>
- Abbey Court: <https://www.abbey-court.com/>
- Four Courts Hostel:  
<https://fourcourtshostel.dublinhotelsweb.com/en/>



## Preventing Fraud

Take care and be vigilant when scouting for accommodation - there have been reported incidences of fraud and attempted fraud on students in Dublin. Be extra cautious with advertisements on social media; it is preferable to use registered and recommended sites as listed above.

### Preventing Fraud - The DOs and DON'Ts:

PLEASE DO THESE THINGS	PLEASE DO NOT!
<ul style="list-style-type: none"> <li>→ View all properties in person accompanied by a friend</li> <li>→ Check keys and locks with landlord</li> <li>→ Be sure that all banks/online companies are legitimate</li> <li>→ Use a credit card for payments if possible</li> </ul>	<ul style="list-style-type: none"> <li>→ Make any payments without physically viewing the property.</li> <li>→ Make any payments if the bank account given is not an Irish Bank Account</li> <li>→ Use Facebook to source accommodation</li> </ul>



- Contact a member of our Student Services Team to help advise you if you fear a place looks suspicious
- Alert the Irish Police (Gardai) on: 00-353-16669063

## Renting Guidelines

Regardless of what type of accommodation you choose - whether it be a house, apartment or home share - the following guidelines will help you ensure you don't fall prey to dodgy landlords and help you secure a safe home.

### 1. Location, Location, Location!

It would be ideal to land your dream accommodation in central Dublin. However, Dublin's leafy suburbs are wonderful, vibrant places; well served by public transport to the City Centre via Dublin Bus, Dart and Luas. Review maps of Dublin and cross them with Dublin Transport link maps to identify 'Plan B' areas for your search.

### 2. Decide on a budget

Before starting your search; set your budget for how much you are willing to spend on accommodation each month. Students living closer to the college (Dublin 2) will pay more rent for the convenience. However, Dublin suburbs are well-connected via public transport with most areas within 30 minutes of the City Centre. Generally speaking; the further out you go - the more you get for your money!

### 3. View before paying

When renting from a private landlord never pay any money up front before visiting the property in person. Book a viewing and inspect the property with a careful eye. Bring a friend if you feel



more comfortable. Scan the area - is it safe? Are there shops nearby? Is it well-serviced by transport?

#### 4. Check that everything is working

Prospective tenants should test that doors and windows open and close/lock securely. Check for adequate lighting, ventilation and heating in all rooms of the house, and turn on appliances to check that they work properly e.g. cookers, showers etc.

#### 5. Sign a rental agreement

It is highly recommended that you receive a written lease and a rent book to record your rental payments. Always read and understand the Rental Agreement after signing; if in doubt about any of the clauses in the contract seek advice before signing.

#### 6. Get a receipt for any payments made

Use online banking for all transactions whenever possible. This includes deposit and advance rent payments.

#### 7. Make a list of furniture and appliances with the landlord

Damage or loss of property is a regular reason for losing a deposit. Take an inventory of everything in the accommodation and its condition before you move in to avoid any disputes with the landlord when moving out. If necessary, take photographs (with the date stamp on) of the property and ask the landlord to counter-sign them.

#### 8. Know your tenants rights and responsibilities

Generally, rents in Dublin are paid monthly and in advance - not in arrears. Most landlords will also require a security deposit (usually the equivalent of one month's rent) to be paid before you move in. This deposit should be returned to you when you leave the property.

#### 9. Know when the deposit and rent are due

Both tenants and landlords have legal rights and responsibilities. These legal rights come from general landlord/tenant law as well as from any written or verbal tenancy agreement between both. For further information please visit - <https://www.threshold.ie/>



Please read this guide to securely search online databases - <http://www.daft.ie/safety-online>

### 10. Getting to and from DBS

Journey time will depend on your accommodation's location. On average, it takes about 40-60 minutes by bus, tram or train from the suburbs to the city centre. Brickworks Student Accommodation is a 20 minute walk to the DBS campus.

Please familiarise yourself with your route to DBS by using the network options below;

[www.dublinbus.ie](http://www.dublinbus.ie)

[www.luas.ie](http://www.luas.ie)

[www.irishrail.ie](http://www.irishrail.ie)

## Good luck with your accommodation search

### \*Disclaimer

In the absence of any legal or binding agreement between accommodation owners/advertisers and DBS, the College cannot be held liable for any accommodation, contacts, contracts, inductions and/or arrangements arising from the use of this guide. The selection of accommodation and terms of the agreement or contract are entirely a matter between the individual students and the external provider.

DBS welcomes all feedback from students and prospective students.

If you have any questions please contact us through [student.services@dbs.ie](mailto:student.services@dbs.ie)

